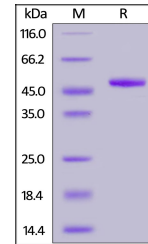


## Product Datasheet

### ILDR2 Recombinant Protein (orb1231476)

<b>Description</b>	ILDR2 Recombinant Protein
<b>Tested Applications</b>	WB
<b>Target</b>	ILDR2
<b>Preservatives</b>	PBS, pH 7.4
<b>Form/Appearance</b>	Lyophilized
<b>Storage</b>	Lyophilized Protein should be stored at -20°C or lower for long term storage. Upon reconstitution, working aliquots should be stored at -20°C or -70°C. Avoid repeated freeze-thaw cycles.
<b>Tag</b>	Fc Tag
<b>Note</b>	For research use only
<b>Application notes</b>	This protein carries a human IgG1 Fc tag at the C-terminus. The protein has a calculated MW of 45.1 kDa. The protein migrates as 45-50 kDa under reducing (R) condition (SDS-PAGE) due to Glycosylation.
<b>Protein Sequence</b>	Leu 21 - Glu 186
<b>Purity</b>	> 95% as determined by SDS-PAGE.
<b>Source</b>	HEK293 cells
<b>MW</b>	45.1 kDa
<b>Uniprot ID</b>	<a href="#">Q71H61</a>
<b>NCBI</b>	<a href="#">NP_955383.1</a>
<b>Dilution Range</b>	This protein carries a human IgG1 Fc tag at the C-terminus. The protein has a calculated MW of 45.1 kDa. The protein migrates as 45-50 kDa under reducing (R) condition (SDS-PAGE) due to Glycosylation.
<b>Expiration Date</b>	6 months from date of receipt.



Human ILDR2, Fc Tag on SDS-PAGE under re...