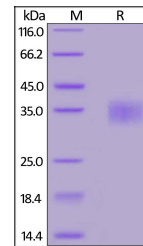


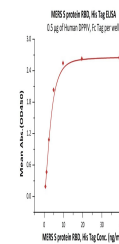
Product Datasheet

MERS S Recombinant Protein RBD (orb1231474)

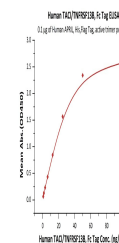
Description	MERS S Recombinant Protein RBD
Tested Applications	ELISA, WB
Preservatives	PBS, pH 7.4
Form/Appearance	Lyophilized
Storage	Lyophilized Protein should be stored at -20°C or lower for long term storage. Upon reconstitution, working aliquots should be stored at -20°C or -70°C. Avoid repeated freeze-thaw cycles.
Tag	His Tag
Note	For research use only
Application notes	This protein carries a polyhistidine tag at the C-terminus. The protein has a calculated MW of 28.2 kDa. The protein migrates as 33-40 kDa under reducing (R) condition (SDS-PAGE) due to glycosylation.
Protein Sequence	Glu 367 - Tyr 606
Purity	> 90% as determined by SDS-PAGE.
Source	HEK293 cells
MW	28.2 kDa
Dilution Range	This protein carries a polyhistidine tag at the C-terminus. The protein has a calculated MW of 28.2 kDa. The protein migrates as 33-40 kDa under reducing (R) condition (SDS-PAGE) due to glycosylation.
Expiration Date	6 months from date of receipt.



MERS S protein RBD, His Tag on SDS-PAGE ...



Immobilized Human DPPIV, Fc Tag at 5 ug/...



Immobilized MERS S protein RBD, His Tag ...