

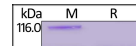
---

## Product Datasheet

### SARS-CoV-2 (COVID-19) S1 Recombinant Protein NTD (orb1231454)

**Description**

SARS-CoV-2 (COVID-19) S1 Recombinant Protein


**Tested Applications**

ELISA, WB

**Target**

S

**Preservatives**

PBS, pH 7.3

**Form/Appearance**

Lyophilized

**Storage**

Lyophilized Protein should be stored at -20°C or lower for long term storage. Upon reconstitution, working aliquots should be stored at -20°C or -70°C. Avoid repeated freeze-thaw cycles.

**Tag**

His Tag

**Note**

For research use only

**Application notes**

This protein carries a polyhistidine tag at the C-terminus. The protein has a calculated MW of 34.9 kDa. The protein migrates as 45-65 kDa under reducing (R) condition (SDS-PAGE) due to Glycosylation.

**Protein Sequence**

Ser 13 - Leu 303

**Purity**

&gt; 90% as determined by SDS-PAGE.

**Source**

HEK293 cells

**MW**

34.9 kDa

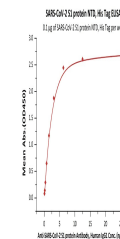
**Uniprot ID**
[P0DTC2](#)
**NCBI**
[QHD43416.1](#)
**Dilution Range**

This protein carries a polyhistidine tag at the C-terminus. The protein has a calculated MW of 34.9 kDa. The protein migrates as 45-65 kDa under reducing (R) condition (SDS-PAGE) due to Glycosylation.

**Expiration Date**

6 months from date of receipt.

SARS-CoV-2 S1 protein NTD, His Tag on SD...



Immobilized SARS-CoV-2 S1 protein NTD, H...