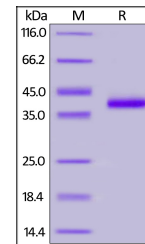


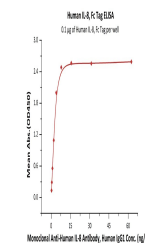
Product Datasheet

IL-8 / CXCL8 Recombinant Protein (orb1231440)

Description	IL-8 / CXCL8 Recombinant Protein
Tested Applications	ELISA, WB
Target	CXCL8
Preservatives	50 mM Tris, 100 mM Glycine, 150 mM NaCl, pH 7.5
Form/Appearance	Lyophilized
Storage	Lyophilized Protein should be stored at -20°C or lower for long term storage. Upon reconstitution, working aliquots should be stored at -20°C or -70°C. Avoid repeated freeze-thaw cycles.
Tag	Fc Tag
Note	For research use only
Application notes	This protein carries a human IgG1 Fc tag at the C-terminus. The protein has a calculated MW of 34.8 kDa. The protein migrates as 37-43 kDa under reducing (R) condition (SDS-PAGE) due to glycosylation.
Protein Sequence	Ser 28 - Ser 99
Purity	> 95% as determined by SDS-PAGE.
Source	HEK293 cells
MW	34.8 kDa
Uniprot ID	P10145
NCBI	NP_000575.1
Dilution Range	This protein carries a human IgG1 Fc tag at the C-terminus. The protein has a calculated MW of 34.8 kDa. The protein migrates as 37-43 kDa under reducing (R) condition (SDS-PAGE) due to glycosylation.
Expiration Date	6 months from date of receipt.



Human IL-8, Fc Tag on SDS-PAGE under red...



Immobilized Human IL-8, Fc Tag at 1 ug/m...