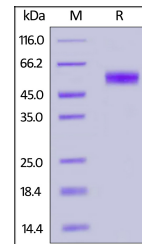


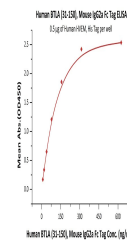
Product Datasheet

BTLA (31-150) Recombinant Protein (orb1231417)

Description	BTLA (31-150) Recombinant Protein
Tested Applications	ELISA, WB
Target	BTLA
Preservatives	100 mM Glycine, 150 mM NaCl, Arginine, pH 3.2
Form/Appearance	Lyophilized
Storage	Lyophilized Protein should be stored at -20°C or lower for long term storage. Upon reconstitution, working aliquots should be stored at -20°C or -70°C. Avoid repeated freeze-thaw cycles.
Tag	Mouse IgG Fc Tag
Note	For research use only
Application notes	This protein carries a mouse IgG2a Fc tag at the C-terminus. The protein has a calculated MW of 40.6 kDa. The protein migrates as 50-60 kDa under reducing (R) condition (SDS-PAGE) due to glycosylation.
Protein Sequence	Lys 31 - Ser 150
Purity	> 95% as determined by SDS-PAGE.
Source	HEK293 cells
MW	40.6 kDa
Uniprot ID	Q7Z6A9
NCBI	AAP44003.1
Dilution Range	This protein carries a mouse IgG2a Fc tag at the C-terminus. The protein has a calculated MW of 40.6 kDa. The protein migrates as 50-60 kDa under reducing (R) condition (SDS-PAGE) due to glycosylation.
Expiration Date	6 months from date of receipt.



Human
BTLA,
Mouse
IgG2a Fc
Tag on SDS-
PA...



Immobilized
Human
HVEM, His
Tag at 5
ug/...