
Product Datasheet

CLEC12A / MICL / CLL-1 Recombinant Protein (orb1231408)

Description

CLEC12A / M1CL / CLL-1 Recombinant Protein


Tested Applications

ELISA, WB

Target

CLEC12A

Preservatives

PBS, pH 7.4

Form/Appearance

Lyophilized

Storage

Lyophilized Protein should be stored at -20°C or lower for long term storage. Upon reconstitution, working aliquots should be stored at -20°C or -70°C. Avoid repeated freeze-thaw cycles.

Tag

His Tag

Note

For research use only

Application notes

This protein carries a polyhistidine tag at the N-terminus. The protein has a calculated MW of 25.6 kDa. The protein migrates as 35-55 kDa under reducing (R) condition (SDS-PAGE) due to glycosylation.

Protein Sequence

His 65 - Ala 265

Purity

> 90% as determined by SDS-PAGE.

Source

HEK293 cells

MW

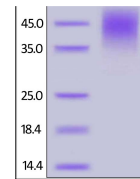
25.6 kDa

Uniprot ID
[Q5QGZ9](https://www.uniprot.org/uniprot/Q5QGZ9)
NCBI
[NP_612210.4](https://www.ncbi.nlm.nih.gov/nuccore/612210.4)
Dilution Range

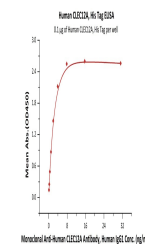
This protein carries a polyhistidine tag at the N-terminus. The protein has a calculated MW of 25.6 kDa. The protein migrates as 35-55 kDa under reducing (R) condition (SDS-PAGE) due to glycosylation.

Expiration Date

6 months from date of receipt.



Human
CLEC12A,
His Tag on
SDS-PAGE
under...



Immobilized
Human
CLEC12A,
His Tag at 1
...