
Product Datasheet

CLEC12A / MICL / CLL-1 Recombinant Protein (orb1231399)

Description

CLEC12A / M1CL / CLL-1 Recombinant Protein


Tested Applications

ELISA, WB

Target

CLEC12A

Preservatives

Tris with Glycine, Arginine and NaCl, pH 7.5

Form/Appearance

Lyophilized

Storage

Lyophilized Protein should be stored at -20°C or lower for long term storage. Upon reconstitution, working aliquots should be stored at -20°C or -70°C. Avoid repeated freeze-thaw cycles.

Tag

Fc Tag

Note

For research use only

Application notes

This protein carries a human IgG1 Fc tag at the N-terminus. The protein has a calculated MW of 50.2 kDa. The protein migrates as 55-70 kDa under reducing (R) condition (SDS-PAGE) due to glycosylation.

Protein Sequence

His 65 - Ala 265

Purity

> 95% as determined by SDS-PAGE.

Source

HEK293 cells

MW

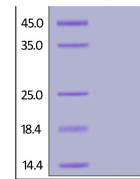
50.2 kDa

Uniprot ID
[Q5QGZ9](https://www.uniprot.org/entry/Q5QGZ9)
NCBI
[NP_612210.4](https://www.ncbi.nlm.nih.gov/nuccore/NP_612210.4)
Dilution Range

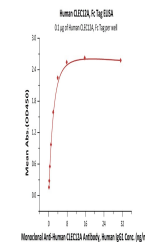
This protein carries a human IgG1 Fc tag at the N-terminus. The protein has a calculated MW of 50.2 kDa. The protein migrates as 55-70 kDa under reducing (R) condition (SDS-PAGE) due to glycosylation.

Expiration Date

6 months from date of receipt.



Human CLEC12A, Fc Tag on SDS-PAGE under ...



Immobilized Human CLEC12A, Fc Tag at 1 u...