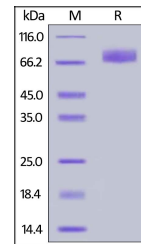


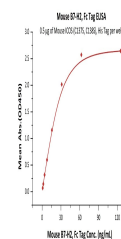
## Product Datasheet

### B7-H2 / ICOSLG Recombinant Protein (orb1231357)

<b>Description</b>	B7-H2 / ICOSLG Recombinant Protein
<b>Tested Applications</b>	ELISA, WB
<b>Target</b>	Icosl
<b>Preservatives</b>	Tris with Glycine, Arginine and NaCl, pH 7.5
<b>Form/Appearance</b>	Lyophilized
<b>Storage</b>	Lyophilized Protein should be stored at -20°C or lower for long term storage. Upon reconstitution, working aliquots should be stored at -20°C or -70°C. Avoid repeated freeze-thaw cycles.
<b>Tag</b>	Fc Tag
<b>Note</b>	For research use only
<b>Application notes</b>	This protein carries a human IgG1 Fc tag at the C-terminus. The protein has a calculated MW of 52.7 kDa. The protein migrates as 65-80 kDa under reducing (R) condition (SDS-PAGE) due to glycosylation.
<b>Protein Sequence</b>	Glu 47 - Lys 279
<b>Purity</b>	> 95% as determined by SDS-PAGE.
<b>Source</b>	HEK293 cells
<b>MW</b>	52.7 kDa
<b>Uniprot ID</b>	<a href="#">Q9JHJ8</a>
<b>NCBI</b>	<a href="#">NP_056605.1</a>
<b>Dilution Range</b>	This protein carries a human IgG1 Fc tag at the C-terminus. The protein has a calculated MW of 52.7 kDa. The protein migrates as 65-80 kDa under reducing (R) condition (SDS-PAGE) due to glycosylation.
<b>Expiration Date</b>	6 months from date of receipt.



Mouse B7-H2, Fc Tag on SDS-PAGE under re...



Immobilized Mouse ICOS (C137S, C138S), H...