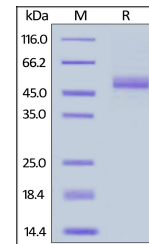


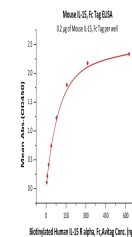
Product Datasheet

IL-15 Recombinant Protein (orb1231338)

Description	IL-15 Recombinant Protein
Tested Applications	ELISA, WB
Target	IL15
Preservatives	Tris with Glycine, Arginine and NaCl, pH 7.5
Form/Appearance	Lyophilized
Storage	Lyophilized Protein should be stored at -20°C or lower for long term storage. Upon reconstitution, working aliquots should be stored at -20°C or -70°C. Avoid repeated freeze-thaw cycles.
Tag	Fc Tag
Note	For research use only
Application notes	This protein carries a human IgG1 Fc tag at the C-terminus. The protein has a calculated MW of 39.7 kDa. The protein migrates as 49 kDa under reducing (R) condition (SDS-PAGE) due to glycosylation.
Protein Sequence	Asn 49 - Ser 162
Purity	> 95% as determined by SDS-PAGE.
Source	HEK293 cells
MW	39.7 kDa
Uniprot ID	P48346
NCBI	NP_032383.1
Dilution Range	This protein carries a human IgG1 Fc tag at the C-terminus. The protein has a calculated MW of 39.7 kDa. The protein migrates as 49 kDa under reducing (R) condition (SDS-PAGE) due to glycosylation.
Expiration Date	6 months from date of receipt.



Mouse IL-15, Fc Tag on SDS-PAGE under re...



Immobilized Mouse IL-15, Fc Tag at 2 ug/...