
Product Datasheet

IL-12 R beta 1 / CD212 Recombinant Protein (orb1231327)

Description

IL-12 R beta 1 / CD212 Recombinant Protein


Tested Applications

ELISA, WB

Target

IL12RB1

Preservatives

Tris with Glycine, Arginine and NaCl, pH 7.5

Form/Appearance

Lyophilized

Storage

Lyophilized Protein should be stored at -20°C or lower for long term storage. Upon reconstitution, working aliquots should be stored at -20°C or -70°C. Avoid repeated freeze-thaw cycles.

Tag

Fc Tag

Note

For research use only

Application notes

This protein carries a human IgG1 Fc tag at the C-terminus. The protein has a calculated MW of 83.5 kDa. The protein migrates as 90 kDa under reducing (R) condition (SDS-PAGE) due to glycosylation.

Protein Sequence

Cys 24 - Glu 540

Purity

> 95% as determined by reduced SDS-PAGE.

Source

HEK293 cells

MW

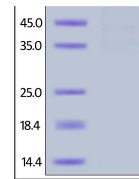
83.5 kDa

Uniprot ID
[P42701](#)
NCBI
[NP_005526.1](#)
Dilution Range

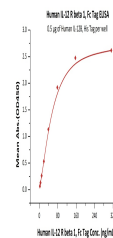
This protein carries a human IgG1 Fc tag at the C-terminus. The protein has a calculated MW of 83.5 kDa. The protein migrates as 90 kDa under reducing (R) condition (SDS-PAGE) due to glycosylation.

Expiration Date

6 months from date of receipt.



Human IL-12 R beta 1, Fc Tag on SDS-PAGE...



Immobilized Human IL-12B, His Tag at 5 u...