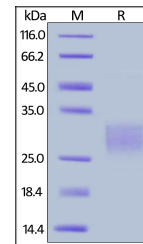


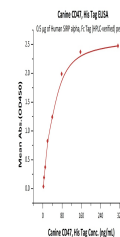
Product Datasheet

Canine CD47 Recombinant Protein (orb1231323)

Description	Canine CD47 Recombinant Protein
Tested Applications	ELISA, WB
Preservatives	PBS, pH 7.4
Form/Appearance	Lyophilized
Storage	Lyophilized Protein should be stored at -20°C or lower for long term storage. Upon reconstitution, working aliquots should be stored at -20°C or -70°C. Avoid repeated freeze-thaw cycles.
Tag	His Tag
Note	For research use only
Application notes	This protein carries a polyhistidine tag at the C-terminus. The protein has a calculated MW of 15.8 kDa. The protein migrates as 27-32 kDa under reducing (R) condition (SDS-PAGE) due to glycosylation.
Protein Sequence	Gln 19 - Asn 140
Purity	> 90% as determined by reduced SDS-PAGE.
Source	HEK293 cells
MW	15.8 kDa
Dilution Range	This protein carries a polyhistidine tag at the C-terminus. The protein has a calculated MW of 15.8 kDa. The protein migrates as 27-32 kDa under reducing (R) condition (SDS-PAGE) due to glycosylation.
Expiration Date	6 months from date of receipt.



Canine CD47, His Tag on SDS-PAGE under R...



Immobilized Human SIRP alpha, Fc Tag (HP...