
Product Datasheet

Canine M-CSF R / CSF1R / CD115 Recombinant Protein (orb1231305)

Description

Canine M-CSF R / CSF1R / CD115 Recombinant


Tested Applications

ELISA, WB

Target

CSF1R

Preservatives

PBS, pH 7.4

Form/Appearance

Lyophilized

Storage

Lyophilized Protein should be stored at -20°C or lower for long term storage. Upon reconstitution, working aliquots should be stored at -20°C or -70°C. Avoid repeated freeze-thaw cycles.

Tag

His Tag

Note

For research use only

Application notes

This protein carries a polyhistidine tag at the C-terminus. The protein has a calculated MW of 56.1 kDa. The protein migrates as 70-100 kDa under reducing (R) condition (SDS-PAGE) due to glycosylation.

Protein Sequence

Val 20 - Pro 510

Purity

> 95% as determined by SDS-PAGE.

Source

HEK293 cells

MW

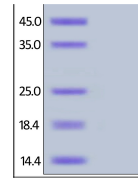
56.1 kDa

NCBI
[XP_546306.2](#)
Dilution Range

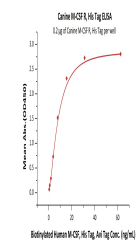
This protein carries a polyhistidine tag at the C-terminus. The protein has a calculated MW of 56.1 kDa. The protein migrates as 70-100 kDa under reducing (R) condition (SDS-PAGE) due to glycosylation.

Expiration Date

6 months from date of receipt.



Canine M-CSF R, His Tag on SDS-PAGE unde...



Immobilized Canine M-CSF R, His Tag at 2...