

---

## Product Datasheet

### IL-15 R alpha / CD215 Recombinant Protein (orb1231304)

**Description**

IL-15 R alpha / CD215 Recombinant Protein


**Tested Applications**

ELISA, WB

**Target**

IL15RA

**Preservatives**

Tris with Glycine, Arginine and NaCl, pH 7.5

**Form/Appearance**

Lyophilized

**Storage**

Lyophilized Protein should be stored at -20°C or lower for long term storage. Upon reconstitution, working aliquots should be stored at -20°C or -70°C. Avoid repeated freeze-thaw cycles.

**Tag**

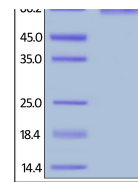
Fc Tag

**Note**

For research use only

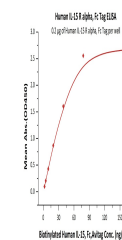
**Application notes**

This protein carries a human IgG1 Fc tag at the C-terminus. The protein has a calculated MW of 44.8 kDa. The protein migrates as 60-80 kDa under reducing (R) condition (SDS-PAGE) due to glycosylation.



Human IL-15 R alpha, Fc Tag on SDS-PAGE

...



Immobilized Human IL-15 R alpha, Fc Tag ...

**Protein Sequence**

Ile 31 - Thr 205

**Purity**

&gt; 95% as determined by SDS-PAGE.

**Source**

HEK293 cells

**MW**

44.8 kDa

**Uniprot ID**
[Q13261](#)
**NCBI**
[NP\\_002180.1](#)
**Dilution Range**

This protein carries a human IgG1 Fc tag at the C-terminus. The protein has a calculated MW of 44.8 kDa. The protein migrates as 60-80 kDa under reducing (R) condition (SDS-PAGE) due to glycosylation.

**Expiration Date**

6 months from date of receipt.