

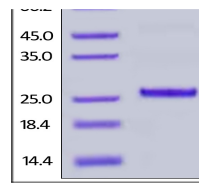
---

## Product Datasheet

**Rhesus macaque / Complement Factor D / CFD  
Recombinant Protein (orb1231299)**

**Description**

Rhesus macaque / Complement Factor D



Rhesus  
macaque/Cynomolgus  
Complement Fac...

**Tested Applications**

WB

**Target**

CFD

**Preservatives**

50 mM Tris, 150 mM NaCl, pH 8.0

**Form/Appearance**

Lyophilized

**Storage**

Lyophilized Protein should be stored at -20°C or lower for long term storage. Upon reconstitution, working aliquots should be stored at -20°C or -70°C. Avoid repeated freeze-thaw cycles.

**Tag**

His Tag

**Note**

For research use only

**Application notes**

This protein carries a polyhistidine tag at the C-terminus. The protein has a calculated MW of 26.5 kDa. The protein migrates as 25-27 kDa under non-reducing (NR) condition (SDS-PAGE) due to glycosylation.

**Protein Sequence**

Ile 26 - Ala 253

**Purity**

&gt; 90% as determined by SDS-PAGE.

**Source**

HEK293 cells

**MW**

26.5 kDa

**NCBI**
[XP\\_005587397.1](https://www.ncbi.nlm.nih.gov/nuccore/XP_005587397.1)
**Dilution Range**

This protein carries a polyhistidine tag at the C-terminus. The protein has a calculated MW of 26.5 kDa. The protein migrates as 25-27 kDa under non-reducing (NR) condition (SDS-PAGE) due to glycosylation.

**Expiration Date**

6 months from date of receipt.