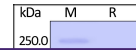

Product Datasheet

Insulin R / CD220 (28-944) Recombinant Protein (orb1231298)

Description

Insulin R / CD220 (28-944) Recombinant Protein


Tested Applications

ELISA, WB

Target

INSR

Preservatives

PBS, pH 7.4

Form/Appearance

Lyophilized

Storage

Lyophilized Protein should be stored at -20°C or lower for long term storage. Upon reconstitution, working aliquots should be stored at -20°C or -70°C. Avoid repeated freeze-thaw cycles.

Tag

His Tag

Note

For research use only

Application notes

This protein carries a polyhistidine tag at the C-terminus. The protein has a calculated MW of 106.5 kDa. The protein migrates as 115-125 kDa under reducing (R) condition (SDS-PAGE) due to glycosylation.

Protein Sequence

His 28 - Lys 944

Purity

> 90% as determined by SDS-PAGE.

Source

HEK293 cells

MW

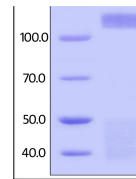
106.5 kDa

Uniprot ID
[P06213](#)
NCBI
[NP_000199.2](#)
Dilution Range

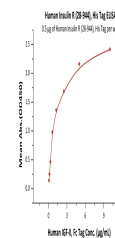
This protein carries a polyhistidine tag at the C-terminus. The protein has a calculated MW of 106.5 kDa. The protein migrates as 115-125 kDa under reducing (R) condition (SDS-PAGE) due to glycosylation.

Expiration Date

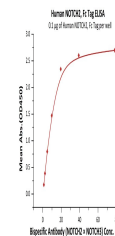
6 months from date of receipt.



Human Insulin R, His Tag (SPR verified) ...



Immobilized Human Insulin R, His Tag at ...



Immobilized Human Insulin R, His Tag at ...