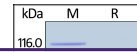

Product Datasheet

Rhesus macaque Growth Hormone R (GHR) Recombinant Protein (orb1231290)

Description

Rhesus macaque Growth Hormone R (GHR)


Tested Applications

ELISA, WB

Target

GHR

Preservatives

Tris with Glycine, Arginine and NaCl, pH 7.5

Form/Appearance

Lyophilized

Storage

Lyophilized Protein should be stored at -20°C or lower for long term storage. Upon reconstitution, working aliquots should be stored at -20°C or -70°C. Avoid repeated freeze-thaw cycles.

Tag

Fc Tag

Note

For research use only

Application notes

This protein carries a human IgG1 Fc tag at the C-terminus. The protein has a calculated MW of 54.7 kDa. The protein migrates as 66-90 kDa under reducing (R) condition (SDS-PAGE) due to glycosylation.

Protein Sequence

Phe 19 - Tyr 264

Purity

> 90% as determined by SDS-PAGE.

Source

HEK293 cells

MW

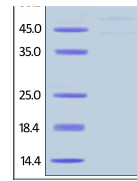
54.7 kDa

Uniprot ID
[P79194](https://www.uniprot.org/uniprot/P79194)
NCBI
[NP_001036132.1](https://www.ncbi.nlm.nih.gov/nuccore/NP_001036132.1)
Dilution Range

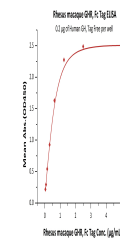
This protein carries a human IgG1 Fc tag at the C-terminus. The protein has a calculated MW of 54.7 kDa. The protein migrates as 66-90 kDa under reducing (R) condition (SDS-PAGE) due to glycosylation.

Expiration Date

6 months from date of receipt.



Rhesus macaque GHR, Fc Tag on SDS-PAGE U...



Immobilized Human GH, Tag Free at 2 ug/m...