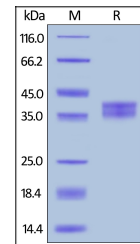


Product Datasheet

Llama IgG2b Fc Recombinant Protein (orb1231261)

Description	Llama IgG2b Fc Recombinant Protein
Tested Applications	WB
Preservatives	Tris with Glycine, Arginine and NaCl, pH 7.5
Form/Appearance	Lyophilized
Storage	Lyophilized Protein should be stored at -20°C or lower for long term storage. Upon reconstitution, working aliquots should be stored at -20°C or -70°C. Avoid repeated freeze-thaw cycles.
Tag	Tag Free
Note	For research use only
Application notes	This protein carries no "tag". The protein has a calculated MW of 27.3 kDa. The protein migrates as 35-40 kDa under reducing (R) condition (SDS-PAGE) due to glycosylation.
Protein Sequence	Glu 1-Ser 243
Clonality	Recombinant
Purity	> 90% as determined by SDS-PAGE.
Source	HEK293 cells
MW	27.3 kDa
NCBI	AAX73259.1
Dilution Range	This protein carries no "tag". The protein has a calculated MW of 27.3 kDa. The protein migrates as 35-40 kDa under reducing (R) condition (SDS-PAGE) due to glycosylation.
Expiration Date	6 months from date of receipt.



Llama IgG2b Fc, Tag Free on SDS-PAGE und...