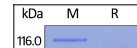

Product Datasheet

IL-1 Rrp2 / IL-1 R6 Recombinant Protein (orb1231235)

Description

IL-1 Rrp2 / IL-1 R6 Recombinant Protein


Tested Applications

WB

Target

IL1RL2

Preservatives

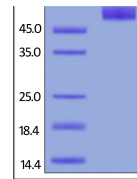
PBS, pH 7.4

Form/Appearance

Lyophilized

Storage

Lyophilized Protein should be stored at -20°C or lower for long term storage. Upon reconstitution, working aliquots should be stored at -20°C or -70°C. Avoid repeated freeze-thaw cycles.



Human IL-1 Rrp2, His Tag on SDS-PAGE und...

Tag

His Tag

Note

For research use only

Application notes

This protein carries a polyhistidine tag at the C-terminus. The protein has a calculated MW of 37.8 kDa. The protein migrates as 55-66 kDa under reducing (R) condition (SDS-PAGE) due to glycosylation.

Protein Sequence

Asp 20 - Arg 335

Purity

> 90% as determined by SDS-PAGE.

Source

HEK293 cells

MW

37.8 kDa

Uniprot ID
[Q9HB29](#)
NCBI
[NP_003845.2](#)
Dilution Range

This protein carries a polyhistidine tag at the C-terminus. The protein has a calculated MW of 37.8 kDa. The protein migrates as 55-66 kDa under reducing (R) condition (SDS-PAGE) due to glycosylation.

Expiration Date

6 months from date of receipt.