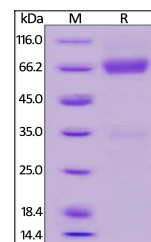


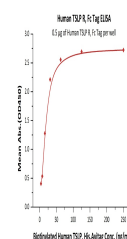
## Product Datasheet

### TSLP R Recombinant Protein (orb1231182)

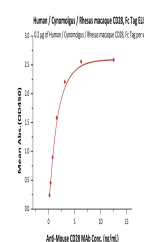
<b>Description</b>	TSLP R Recombinant Protein
<b>Tested Applications</b>	ELISA, WB
<b>Target</b>	CRLF2
<b>Preservatives</b>	Tris with Glycine, Arginine and NaCl, pH 7.5
<b>Form/Appearance</b>	Lyophilized
<b>Storage</b>	Lyophilized Protein should be stored at -20°C or lower for long term storage. Upon reconstitution, working aliquots should be stored at -20°C or -70°C. Avoid repeated freeze-thaw cycles.
<b>Tag</b>	Fc Tag
<b>Note</b>	For research use only
<b>Application notes</b>	This protein carries a human IgG1 Fc tag at the C-terminus. The protein has a calculated MW of 50.4 kDa. The protein migrates as 62-90 kDa under reducing (R) condition (SDS-PAGE) due to glycosylation.
<b>Protein Sequence</b>	Gly 25 - Lys 231
<b>Purity</b>	> 95% as determined by SDS-PAGE.
<b>Source</b>	HEK293 cells
<b>MW</b>	50.4 kDa
<b>Uniprot ID</b>	<b>Q9HC73</b>
<b>NCBI</b>	<b>NP_071431.2</b>
<b>Dilution Range</b>	This protein carries a human IgG1 Fc tag at the C-terminus. The protein has a calculated MW of 50.4 kDa. The protein migrates as 62-90 kDa under reducing (R) condition (SDS-PAGE) due to glycosylation.
<b>Expiration Date</b>	6 months from date of receipt.



Human TSLP R, Fc Tag on SDS-PAGE under r...



Immobilized Human TSLP R, Fc Tag at 5 ug...



Biotinylated Human TSLP (R127A, R130A), ...