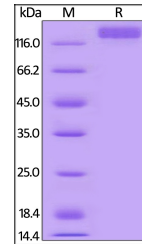


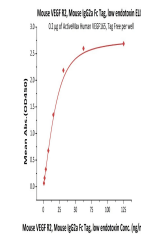
Product Datasheet

VEGF R2 / KDR Recombinant Protein (orb1231169)

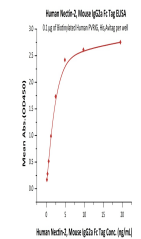
Description	VEGF R2 / KDR Recombinant Protein
Tested Applications	ELISA, WB
Target	Kdr
Preservatives	50 mM Tris, 100 mM Glycine, pH 7.5
Form/Appearance	Lyophilized
Storage	Lyophilized Protein should be stored at -20°C or lower for long term storage. Upon reconstitution, working aliquots should be stored at -20°C or -70°C. Avoid repeated freeze-thaw cycles.
Tag	Mouse IgG Fc Tag
Note	For research use only
Application notes	This protein carries a mouse IgG2a Fc tag at the C-terminus. The protein has a calculated MW of 110.1 kDa. The protein migrates as 120-135 kDa under reducing (R) condition (SDS-PAGE) due to glycosylation.
Protein Sequence	Ala 20 - Glu 762
Purity	> 95% as determined by SDS-PAGE.
Source	HEK293 cells
MW	110.1 kDa
Uniprot ID	P35918
NCBI	034742.2
Dilution Range	This protein carries a mouse IgG2a Fc tag at the C-terminus. The protein has a calculated MW of 110.1 kDa. The protein migrates as 120-135 kDa under reducing (R) condition (SDS-PAGE) due to glycosylation.
Expiration Date	6 months from date of receipt.



Mouse VEGF R2, Mouse IgG2a Fc Tag, IgG2a Fc Tag, low e...



Immobilized ActiveMax Human VEGF165, Tag...



Immobilized ActiveMax Mouse VEGF120, Tag...