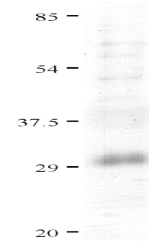


## Product Datasheet

### IL-33 Recombinant Protein (orb1228220)

<b>Description</b>	IL-33 Recombinant Protein
<b>Tested Applications</b>	ELISA, WB
<b>Target</b>	IL33
<b>Preservatives</b>	100mM sodium phosphate, 500mM NaCl, 25 mM imidazole, 10% glycerol
<b>Form/Appearance</b>	Liquid
<b>Storage</b>	Store in working aliquots at -70°C. Avoid freeze/thaw cycles. When working with proteins care should be taken to keep recombinant protein at a cool and stable temperature.
<b>Tag</b>	Fusion Partner: C-terminal His-tag
<b>Note</b>	For research use only
<b>Application notes</b>	This recombinant protein can be used for WB and ELISA. For research use only.
<b>Protein Sequence</b>	aa 1 - 270
<b>Purity</b>	~95%
<b>Source</b>	E. coli
<b>MW</b>	30 kDa (Calculated)
<b>Uniprot ID</b>	<a href="#">O95760</a>
<b>NCBI</b>	<a href="#">NP_254274</a>
<b>Dilution Range</b>	This recombinant protein can be used for WB and ELISA. For research use only.
<b>Expiration Date</b>	6 months from date of receipt.



SDS-PAGE analysis of recombinant IL-33 f...