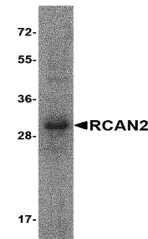


## Product Datasheet

# RCAN2 Isoform 2 Recombinant Protein (orb1228214)

|                            |   |
|----------------------------|---|
| <b>Description</b>         | RCAN2 Isoform 2 Recombinant Protein   |
| <b>Tested Applications</b> | ELISA, WB   |
| <b>Target</b>              | Rcan2   |
| <b>Preservatives</b>       | 100mM sodium phosphate, 10mM Tris, 500mM NaCl, 25 mM imidazole, 2mM MgCl <sub>2</sub> , 10% glycerol  |
| <b>Form/Appearance</b>     | Liquid  |
| <b>Storage</b>             | Store in working aliquots at -70°C. Avoid freeze/thaw cycles. When working with proteins care should be taken to keep recombinant protein at a cool and stable temperature. |
| <b>Tag</b>                 | Fusion Partner: C-terminal His-tag  |
| <b>Note</b>                | For research use only   |
| <b>Application notes</b>   | This recombinant protein can be used for WB and ELISA. For research use only.   |
| <b>Protein Sequence</b>    | aa 2 - 197  |
| <b>Purity</b>              | ~95%  |
| <b>Source</b>              | E. coli   |
| <b>MW</b>                  | 26 kDa (Calculated)   |
| <b>Uniprot ID</b>          | <a href="#">Q9JHG2</a>  |
| <b>NCBI</b>                | <a href="#">AAH62141</a>  |
| <b>Dilution Range</b>      | This recombinant protein can be used for WB and ELISA. For research use only.   |
| <b>Expiration Date</b>     | 6 months from date of receipt.  |



SDS-PAGE analysis of recombinant RCAN2 o...