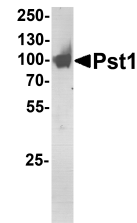


## Product Datasheet

### TM Yeast Pst1 Recombinant Protein (orb1228203)

<b>Description</b>	TM Yeast Pst1 Recombinant Protein
<b>Tested Applications</b>	ELISA, WB
<b>Target</b>	PST1
<b>Preservatives</b>	Lot specific, TBS or PBS
<b>Form/Appearance</b>	Liquid
<b>Storage</b>	Store in working aliquots at -70°C. Avoid freeze/thaw cycles. When working with proteins care should be taken to keep recombinant protein at a cool and stable temperature.
<b>Note</b>	For research use only
<b>Application notes</b>	This recombinant protein can be used for WB and ELISA. For research use only.
<b>Purity</b>	~95%
<b>Source</b>	S. cerevisiae TM strain ( $\Delta$ och1 $\Delta$ mn1 $\Delta$ mn4)
<b>MW</b>	100 kDa on SDS-PAGE
<b>Uniprot ID</b>	<a href="#">Q12355</a>
<b>NCBI</b>	<a href="#">Q12355.1</a>
<b>Dilution Range</b>	This recombinant protein can be used for WB and ELISA. For research use only.
<b>Expiration Date</b>	6 months from date of receipt.



SDS PAGE analysis of Pst1 protein. Purif...