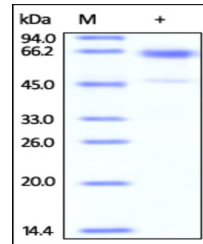


Product Datasheet

Glycophorin A Recombinant Protein (orb1228126)

Description	Glycophorin A Recombinant Protein
Tested Applications	WB
Target	Gypa
Preservatives	50 mM tris, 100 mM glycine, pH 7.5
Form/Appearance	Lyophilized
Storage	Lyophilized Protein should be stored at -20°C or lower for long term storage. Upon reconstitution, working aliquots should be stored at -20°C or -70°C. Avoid repeated freeze-thaw cycles.
Tag	N-Fc, C-His tag
Note	For research use only
Application notes	This recombinant protein can be used for WB. For research use only.
Protein Sequence	Met 1 - Val 108
Purity	> 95% as determined by SDS-PAGE.
Source	HEK293 cells
MW	39.1 kDa
Uniprot ID	P14220
NCBI	P14220
Dilution Range	This recombinant protein can be used for WB. For research use only.
Expiration Date	6 months from date of receipt.



The purity of Mouse CD235a/Glycophorin-A...