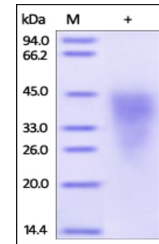


## Product Datasheet

### IGSF16 Recombinant Protein (orb1228124)

<b>Description</b>	IGSF16 Recombinant Protein
<b>Tested Applications</b>	WB
<b>Target</b>	CD300C
<b>Preservatives</b>	PBS, pH 7.4
<b>Form/Appearance</b>	Lyophilized
<b>Storage</b>	Lyophilized Protein should be stored at -20°C or lower for long term storage. Upon reconstitution, working aliquots should be stored at -20°C or -70°C. Avoid repeated freeze-thaw cycles.
<b>Tag</b>	His Tag
<b>Note</b>	For research use only
<b>Application notes</b>	This recombinant protein can be used for WB. For research use only.
<b>Protein Sequence</b>	Gly 21 - Arg 183
<b>Purity</b>	> 95% as determined by SDS-PAGE.
<b>Source</b>	HEK293 cells
<b>MW</b>	18.7 kDa
<b>Uniprot ID</b>	<a href="#">Q08708</a>
<b>NCBI</b>	<a href="#">AAH22279</a>
<b>Dilution Range</b>	This recombinant protein can be used for WB. For research use only.
<b>Expiration Date</b>	6 months from date of receipt.



The purity of rh CD300C/CLM-6/IGSF16 was...