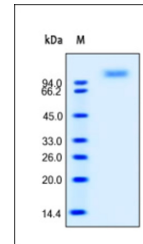


Product Datasheet

E Selectin Recombinant Protein (orb1228119)

Description	E Selectin Recombinant Protein
Tested Applications	WB
Target	SELE
Preservatives	PBS, pH 7.4
Form/Appearance	Lyophilized
Storage	Lyophilized Protein should be stored at -20°C or lower for long term storage. Upon reconstitution, working aliquots should be stored at -20°C or -70°C. Avoid repeated freeze-thaw cycles.
Tag	His Tag
Note	For research use only
Application notes	This recombinant protein can be used for WB. For research use only.
Protein Sequence	Trp 22 - Pro 556
Purity	> 95% as determined by SDS-PAGE.
Source	HEK293 cells
MW	60 kDa
Uniprot ID	P16581
NCBI	NP_000441.2
Dilution Range	This recombinant protein can be used for WB. For research use only.
Expiration Date	6 months from date of receipt.



The purity of rh CD62E was determined by...