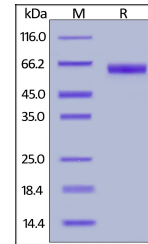


Product Datasheet

EPCR Recombinant Protein (orb1227905)

Description	EPCR Recombinant Protein
Tested Applications	WB
Target	PROCR
Preservatives	50 mM tris, 100 mM glycine, pH 7.5
Form/Appearance	Lyophilized
Storage	Lyophilized Protein should be stored at -20°C or lower for long term storage. Upon reconstitution, working aliquots should be stored at -20°C or -70°C. Avoid repeated freeze-thaw cycles.
Tag	C-Fc Tag
Note	For research use only
Application notes	This recombinant protein can be used for WB. For research use only.
Protein Sequence	Ser 18 - Thr 209
Purity	> 95% as determined by SDS-PAGE.
Source	HEK293 cells
MW	48.6 kDa
Uniprot ID	Q9UNN8
NCBI	AAH14451
Dilution Range	This recombinant protein can be used for WB. For research use only.
Expiration Date	6 months from date of receipt.



Human PROCR, Fc Tag on SDS-PAGE under re...