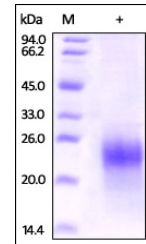


Product Datasheet

CG alpha Recombinant Protein (orb1227778)

Description	CG alpha Recombinant Protein
Tested Applications	WB
Target	CG alpha
Preservatives	PBS, pH 7.4
Form/Appearance	Lyophilized
Storage	Lyophilized Protein should be stored at -20°C or lower for long term storage. Upon reconstitution, working aliquots should be stored at -20°C or -70°C. Avoid repeated freeze-thaw cycles.
Tag	His Tag
Note	For research use only
Application notes	This recombinant protein can be used for WB. For research use only.
Protein Sequence	Ala 25 - Ser 116
Purity	> 92% as determined by SDS-PAGE. Endotoxin level is less than 1.0 EU per ug by the LAL method.
Source	HEK293 cells
MW	12.1 kDa
Uniprot ID	P01215
NCBI	AAH20782
Dilution Range	This recombinant protein can be used for WB. For research use only.
Expiration Date	6 months from date of receipt.



Human CG alpha, His Tag on SDS-PAGE unde...