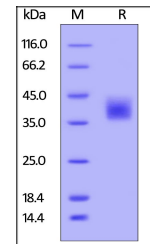


Product Datasheet

M-CSF Recombinant Protein (orb1227739)

Description	M-CSF Recombinant Protein
Tested Applications	ELISA, WB
Target	M-CSF
Preservatives	PBS, pH 7.4
Form/Appearance	Lyophilized
Storage	Lyophilized Protein should be stored at -20°C or lower for long term storage. Upon reconstitution, working aliquots should be stored at -20°C or -70°C. Avoid repeated freeze-thaw cycles.
Tag	His Tag
Note	For research use only
Application notes	This recombinant protein can be used for E, WB. For research use only.
Protein Sequence	Glu 33 - Arg 255
Purity	> 95% as determined by SDS-PAGE. Endotoxin level is less than 1.0 EU per ug by the LAL method.
Source	HEK293 cells
MW	26 kDa
Uniprot ID	P09603
NCBI	P09603
Dilution Range	This recombinant protein can be used for E, WB. For research use only.
Expiration Date	6 months from date of receipt.



Human M-CSF, His Tag on SDS-PAGE under r...