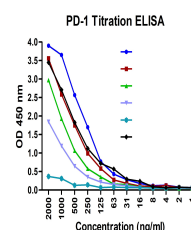


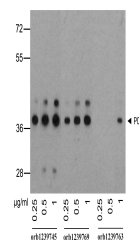
Product Datasheet

PD1 Detection Set (Risk Free) (orb1227446)

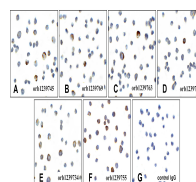
Description	PD1 Detection Set (Risk Free)
Species/Host	Mouse
Reactivity	Human
Conjugation	Unconjugated
Tested Applications	ELISA, FC, ICC, IF, IHC-P, WB
Immunogen	Mouse monoclonal PD-1 antibodies were raised against the extracellular domain of human PD-1.
Preservatives	PBS containing 0.02% sodium azide.
Form/Appearance	Liquid
Concentration	Antibody 1 mg/mL
Storage	Antibodies can be stored at 4°C for three months and -20°C, stable for up to one year. As with all antibodies care should be taken to avoid repeated freeze thaw cycles. Antibodies should not be exposed to prolonged high temperatures.
Note	For research use only
Isotype	IgG1
Clonality	Monoclonal
Expiration Date	Please enquire.



Titration curve analysis of PD-1 mAbs to...



Western blot analysis of PD-1 in over ex...



Immunocytochemistry of PD-1 in over expr...