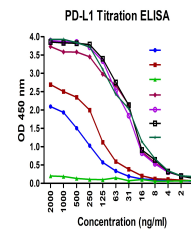


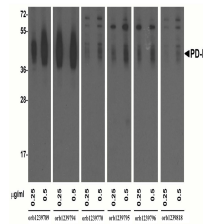
## Product Datasheet

### PDL1 Detection Set (Risk Free) (orb1227443)

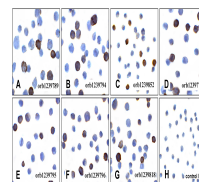
<b>Description</b>	PDL1 Detection Set (Risk Free)
<b>Species/Host</b>	Mouse
<b>Reactivity</b>	Human
<b>Conjugation</b>	Unconjugated
<b>Tested Applications</b>	ELISA, FC, ICC, IF, IHC-P, WB
<b>Immunogen</b>	PD-L1 antibodies were raised against the extracellular domain of human PD-L1.
<b>Preservatives</b>	PBS containing 0.02% sodium azide.
<b>Form/Appearance</b>	Liquid
<b>Concentration</b>	Antibody 1 mg/mL
<b>Storage</b>	Antibodies can be stored at 4°C for three months and -20°C, stable for up to one year. As with all antibodies care should be taken to avoid repeated freeze thaw cycles. Antibodies should not be exposed to prolonged high temperatures.
<b>Note</b>	For research use only
<b>Isotype</b>	IgG1
<b>Clonality</b>	Monoclonal
<b>Expiration Date</b>	Please enquire.



Titration curve analysis of PD-L1 mAbs t...



Western blot analysis of PD-L1 in over e...



Immunocytochemistry of PD-L1 in over exp...