

Product Datasheet

PDL1 ELISA Matched Antibody Pair (Risk Free) (orb1227431)

Description PDL1 ELISA Matched Antibody Pair (Risk Free)

Species/Host Mouse

Reactivity Human

Tested Applications ELISA

Immunogen PD-L1 antibodies were raised against the extracellular domain of human PD-L1.

Preservatives PBS containing 0.02% sodium azide.

Form/Appearance Liquid

Concentration Antibody 1 mg/mL

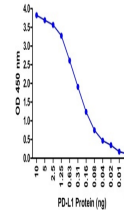
Storage Antibodies can be stored at 4°C for three months and -20°C, stable for up to one year. As with all antibodies care should be taken to avoid repeated freeze thaw cycles. Antibodies should not be exposed to prolonged high temperatures.

Note For research use only

Isotype IgG1

Clonality Monoclonal

Expiration Date Please enquire.



A sandwich ELISA was performed using the...