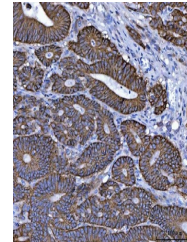


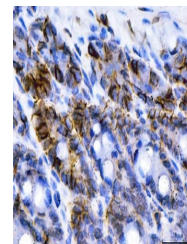
Product Datasheet

NKCC1/SLC12A2 Antibody (monoclonal, 6G7D2) (orb1184753)

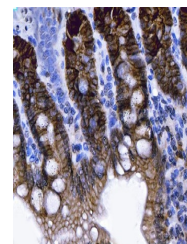
Description	NKCC1/SLC12A2 Antibody (monoclonal, 6G7D2)
Species/Host	Mouse
Reactivity	Human, Mouse, Rat
Conjugation	Unconjugated
Tested Applications	IF, IHC, WB
Immunogen	E.coli-derived human NKCC1/SLC12A2 recombinant protein (Position: K889-K943).
Form/Appearance	Lyophilized
Concentration	Adding 0.2 ml of distilled water will yield a concentration of 500 µg/ml.
Storage	Maintain refrigerated at 2-8°C for up to 2 weeks. For long term storage store at -20°C in small aliquots to prevent freeze-thaw cycles.
Note	For research use only
Application notes	Tested Species: In-house tested species with positive results. Other applications have not been tested. Optimal dilutions should be determined by end users. Adding 0.2 ml of distilled water will yield a concentration of 500 µg/ml.
Isotype	Mouse IgG2a
Clonality	Monoclonal
MW	200 kDa
Uniprot ID	P55011
Expiration Date	12 months from date of receipt.



IHC analysis of NKCC1/SLC12A2 using anti-6G7D2 antibody



IHC analysis of NKCC1/SLC12A2 using anti-6G7D2 antibody



IHC analysis of NKCC1/SLC12A2 using anti-6G7D2 antibody