

---

## Product Datasheet

**Claudin 3/CLDN3 Antibody (monoclonal, 4C7D2)  
(orb1184748)**

**Description**

Claudin 3/CLDN3 Antibody (monoclonal, 4C7D2)



**Species/Host**

Mouse

**Reactivity**

Human

**Conjugation**

Unconjugated

**Tested Applications**

IF, IHC, WB

**Immunogen**

E.coli-derived human Claudin 3/CLDN3 recombinant protein (Position: A101-V220).

**Form/Appearance**

Lyophilized

**Concentration**

Adding 0.2 ml of distilled water will yield a concentration of 500 µg/ml.

**Storage**

Maintain refrigerated at 2-8°C for up to 2 weeks. For long term storage store at -20°C in small aliquots to prevent freeze-thaw cycles.

**Note**

For research use only

**Application notes**

Tested Species: In-house tested species with positive results. Other applications have not been tested. Optimal dilutions should be determined by end users. Adding 0.2 ml of distilled water will yield a concentration of 500 µg/ml.

**Isotype**

Mouse IgG2b

**Clonality**

Monoclonal

**MW**

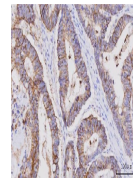
20 kDa

**Uniprot ID**

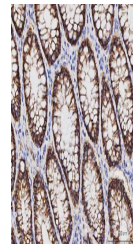
[O15551](#)

**Expiration Date**

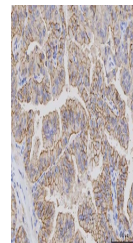
12 months from date of receipt.



IHC analysis of Claudin 3/CLDN3 using an...



IHC analysis of Claudin 3/CLDN3 using an...



IHC analysis of Claudin 3/CLDN3 using an...