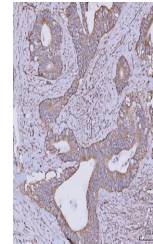


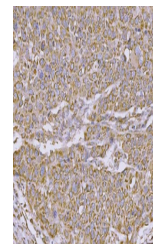
Product Datasheet

CLASP1 Antibody (orb1184727)

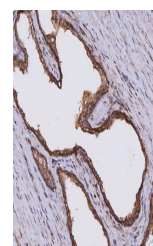
| | |
|----------------------------|--|
| Description | CLASP1 Antibody |
| Species/Host | Rabbit |
| Reactivity | Human, Rat |
| Conjugation | Unconjugated |
| Tested Applications | ELISA, IF, IHC, WB |
| Immunogen | E.coli-derived human CLASP1 recombinant protein (Position: M1-D243). |
| Form/Appearance | Lyophilized |
| Concentration | Adding 0.2 ml of distilled water will yield a concentration of 500 µg/ml. |
| Storage | Maintain refrigerated at 2-8°C for up to 2 weeks. For long term storage store at -20°C in small aliquots to prevent freeze-thaw cycles. |
| Note | For research use only |
| Application notes | Tested Species: In-house tested species with positive results. Other applications have not been tested. Optimal dilutions should be determined by end users. Adding 0.2 ml of distilled water will yield a concentration of 500 µg/ml. |
| Isotype | Rabbit IgG |
| Clonality | Polyclonal |
| MW | 150 kDa |
| Uniprot ID | Q7Z460 |
| Expiration Date | 12 months from date of receipt. |



IHC analysis of CLASP1 using anti-CLASP1...



IHC analysis of CLASP1 using anti-CLASP1...



IHC analysis of CLASP1 using anti-CLASP1...