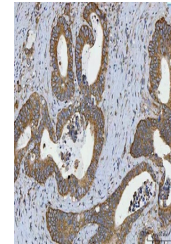


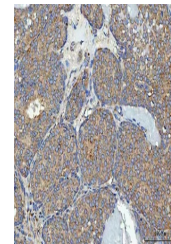
Product Datasheet

RPL32 Antibody (orb1184706)

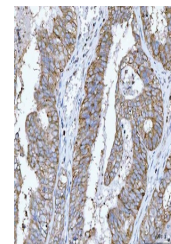
Description	RPL32 Antibody
Species/Host	Rabbit
Reactivity	Human, Mouse, Rat
Conjugation	Unconjugated
Tested Applications	FC, ICC, IF, IHC, WB
Immunogen	A synthetic peptide corresponding to a sequence of human RPL32 (KNRKAIVERAAQLAIR).
Form/Appearance	Lyophilized
Concentration	Adding 0.2 ml of distilled water will yield a concentration of 500 µg/ml.
Storage	Maintain refrigerated at 2-8°C for up to 2 weeks. For long term storage store at -20°C in small aliquots to prevent freeze-thaw cycles.
Note	For research use only
Application notes	Tested Species: In-house tested species with positive results. Other applications have not been tested. Optimal dilutions should be determined by end users. Adding 0.2 ml of distilled water will yield a concentration of 500 µg/ml.
Isotype	Rabbit IgG
Clonality	Polyclonal
MW	18 kDa
Uniprot ID	P62910
Dilution Range	Western blot, 0.1-0.25 µg/ml/ml, Human, Mouse, Rat Immunohistochemistry(Paraffin-embedded Section), 2-5 µg/ml/ml, Human Immunocytochemistry/Immunofluorescence, 5 µg/ml/ml, Human Flow Cytometry, 1-3 µg/ml/1x10 ⁶ cells, Human
Expiration Date	12 months from date of receipt.



IHC analysis of RPL32 using anti-RPL32 a...



IHC analysis of RPL32 using anti-RPL32 a...



IHC analysis of RPL32 using anti-RPL32 a...