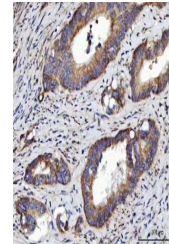


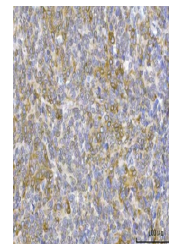
## Product Datasheet

### RRS1 Antibody (orb1173475)

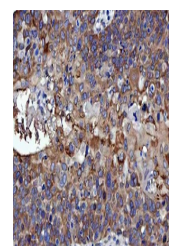
|                            |  |
|----------------------------|--|
| <b>Description</b>         | RRS1 Antibody  |
| <b>Species/Host</b>        | Rabbit   |
| <b>Reactivity</b>          | Human  |
| <b>Conjugation</b>         | Unconjugated   |
| <b>Tested Applications</b> | FC, ICC, IF, IHC, WB   |
| <b>Immunogen</b>           | A synthetic peptide corresponding to a sequence of human RRS1 (ELLRVMNSKKPQLDVTRATNKQ).  |
| <b>Form/Appearance</b>     | Lyophilized  |
| <b>Concentration</b>       | Adding 0.2 ml of distilled water will yield a concentration of 500 µg/ml.  |
| <b>Storage</b>             | Maintain refrigerated at 2-8°C for up to 2 weeks. For long term storage store at -20°C in small aliquots to prevent freeze-thaw cycles.  |
| <b>Note</b>                | For research use only  |
| <b>Application notes</b>   | Tested Species: In-house tested species with positive results. Other applications have not been tested. Optimal dilutions should be determined by end users. Adding 0.2 ml of distilled water will yield a concentration of 500 µg/ml. |
| <b>Isotype</b>             | Rabbit IgG   |
| <b>Clonality</b>           | Polyclonal   |
| <b>MW</b>                  | 41 kDa   |
| <b>Uniprot ID</b>          | <b>Q15050</b>  |
| <b>Dilution Range</b>      | Western blot, 0.25-0.5 µg/ml, Human Immunohistochemistry(Paraffin-embedded Section), 2-5 µg/ml, Human Immunocytochemistry/Immunofluorescence, 5 µg/ml, Human Flow Cytometry, 1-3 µg/1x10 <sup>6</sup> cells, Human                     |
| <b>Expiration Date</b>     | 12 months from date of receipt.  |



IHC analysis of RRS1 using anti-RRS1 ant...



IHC analysis of RRS1 using anti-RRS1 ant...



IHC analysis of RRS1 using anti-RRS1 ant...