

Product Datasheet

Rubisco Recombinant Mouse Monoclonal Antibody (orb1172556)

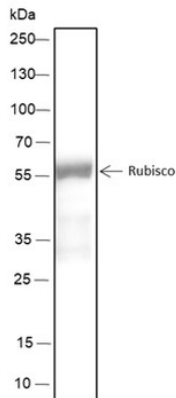
Description	Rubisco Recombinant Mouse Monoclonal Antibody
Species/Host	Mouse
Conjugation	Unconjugated
Tested Applications	WB
Target	rbcl
Preservatives	0.01M TBS (pH7.4) with 1% rAlbumin, 0.02% Proclin300 and 50% Glycerol.
Form/Appearance	Liquid
Concentration	1mg/ml
Storage	Maintain refrigerated at 2-8°C for up to 2 weeks. For long term storage store at -20°C in small aliquots to prevent freeze-thaw cycles.
Note	For research use only
Isotype	IgG1/Kappa
Clonality	Recombinant
Clone Number	H1E7
MW	52 kDa
Dilution Range	WB=1:500-1:2000
Expiration Date	12 months from date of receipt.

Biorbyt Ltd.

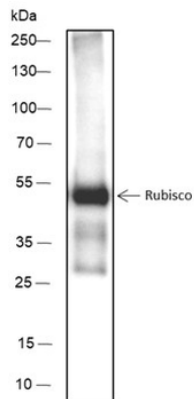
7 Signet Court, Swann's Road,
Cambridge, CB5 8LA, United Kingdom
Email: info@biorbyt.com, support@biorbyt.com
Phone: [+44 \(0\) 1223 859-353](tel:+44(0)1223859353) | Fax: [+1 \(415\) 651-8558](tel:+1(415)6518558)

Biorbyt LLC.

68 TW Alexander Drive,
Durham, NC, 27713, United States
Email: info@biorbyt.com, support@biorbyt.com
Phone: [+1 \(415\) 906-5211](tel:+1(415)9065211) | Fax: [+1 \(415\) 651-8558](tel:+1(415)6518558)



Blocking buffer: 5% NFDM/TBST, Primary ab Dilution: 1:2000,
Primary ab incubation condition: room temperature 2h,
Secondary ab: Goat Anti-Mouse IgG H&L (HRP), Lysate:
Arabidopsis thaliana, Protein loading quantity: 5 μ g, Exposure
time: 10 s, Predicted MW: 55 kDa, Observed MW: 55 kDa.



Blocking buffer: 5% NFDM/TBST, Primary ab Dilution: 1:2000,
Primary ab incubation condition: room temperature 2h,
Secondary ab: Goat Anti-Mouse IgG H&L (HRP), Lysate: Rice,
Protein loading quantity: 0.008 μ g, Exposure time: 10 s,
Predicted MW: 55 kDa, Observed MW: 55 kDa.

Biorbyt Ltd.

7 Signet Court, Swann's Road,
Cambridge, CB5 8LA, United Kingdom
Email: info@biorbyt.com, support@biorbyt.com
Phone: [+44 \(0\) 1223 859-353](tel:+44(0)1223859353) | Fax: [+1 \(415\) 651-8558](tel:+1(415)6518558)

Biorbyt LLC.

68 TW Alexander Drive,
Durham, NC, 27713, United States
Email: info@biorbyt.com, support@biorbyt.com
Phone: [+1 \(415\) 906-5211](tel:+1(415)9065211) | Fax: [+1 \(415\) 651-8558](tel:+1(415)6518558)