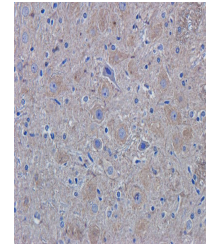


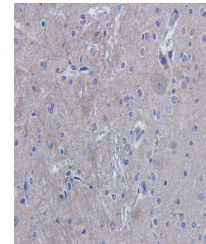
Product Datasheet

ROR1 antibody (orb11664)

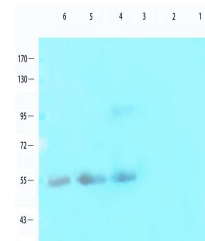
Description	ROR1 antibody
Species/Host	Rabbit
Reactivity	Human, Mouse, Rat
Conjugation	Unconjugated
Tested Applications	IHC-P, WB
Immunogen	KLH conjugated synthetic peptide derived from human ROR1. Please contact us for the exact immunogen sequence. The peptide is available as orb12936.
Target	ROR1
Form/Appearance	10 mM PBS, 0.02% sodium azide
Concentration	- 100 µg (in 200 µl): 0.5 mg/ml- 200 µg (in 400 µl): 0.5 mg/ml
Storage	Store at 4°C for up to two weeks. For long term storage, aliquot and store at -20°C, avoid freeze/thaw cycles.
Note	For research use only
Isotype	IgG
Clonality	Polyclonal
Purity	Polyclonal antibodies are purified by peptide affinity chromatography
MW	104 kDa
Uniprot ID	Q01973
Entrez	4919
Dilution Range	IHC-P: 1:50-300, WB: 1:200-2000
Expiration Date	12 months from date of receipt.



Immunohistochemical staining of paraffin...



Immunohistochemical staining of rat brai...



Western blot analysis of mouse brain (la...