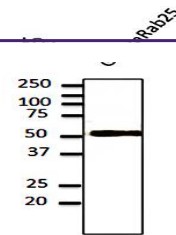

Product Datasheet

Rab25 antibody (orb11633)

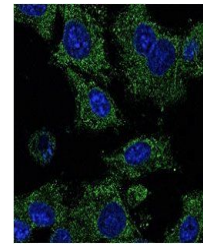
Description

RAB25 belongs to the large RAB family of low

	intracell...
Species/Host	Goat
Reactivity	Bovine, Canine, Donkey, Equine, Feline, Gallus, Goat, Guinea pig, Hamster, Human, Mouse, Other, Porcine, Primate, Rabbit, Rat, Sheep
Conjugation	Unconjugated
Tested Applications	IF, IHC-Fr, IHC-P, WB
Immunogen	Purified recombinant peptide derived from within residues 120 aa to the C-terminus of mouse Rab25 produced in E. coli.
Target	Rab25
Preservatives	PBS, 20% glycerol and 0.05% sodium azide
Form/Appearance	Polyclonal antibody supplied as a 200 µl (2 mg/ml) aliquot in PBS, 20% glycerol and 0.05% sodium azide. This antibody is epitope-affinity purified from goat antiserum.
Concentration	2 mg/ml
Storage	Store at -20°C for long-term storage. Store at 2-8°C for up to one month.
Note	For research use only
Application notes	The antibody solution should be gently mixed before use.
Isotype	IgG
Clonality	Polyclonal
Dilution Range	WB:1:250-1:2,000, IF:1:25-1:250, IHC-P:1:200-1:1,000, IHC-F:1:200-1:1,000
Expiration Date	12 months from date of receipt.



Western blot analysis of transfected 293...



Immunofluorescence analysis of Hepa1-6 C...