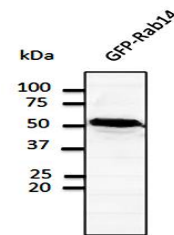


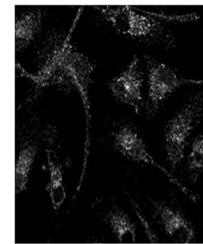
Product Datasheet

Rab14 antibody (orb11620)

Description	RAB14 belongs to the large RAB family of low molecular weight GTPases that are involved in intracell...
Species/Host	Goat
Reactivity	Bovine, Canine, Donkey, Equine, Feline, Gallus, Goat, Guinea pig, Hamster, Human, Mouse, Other, Porcine, Primate, Rabbit, Rat, Sheep
Conjugation	Unconjugated
Tested Applications	IF, WB
Immunogen	Purified recombinant peptide derived from within residues 110 aa to the C-terminus of mouse Rab14 produced in E. coli.
Target	Rab14
Preservatives	PBS, 20% glycerol and 0.05% sodium azide
Form/Appearance	Polyclonal antibody supplied as a 200 µl (2 mg/ml) aliquot in PBS, 20% glycerol and 0.05% sodium azide. This antibody is epitope-affinity purified from goat antiserum.
Concentration	2 mg/ml
Storage	Store at -20°C for long-term storage. Store at 2-8°C for up to one month.
Note	For research use only
Application notes	The antibody solution should be gently mixed before use.
Isotype	IgG
Clonality	Polyclonal
Dilution Range	WB:1:250-1:2,000, IF:1:25-1:200
Expiration Date	12 months from date of receipt.



Western blot analysis of transfected 293...



Confocal immunofluorescence analysis of ...