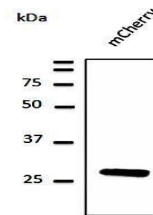


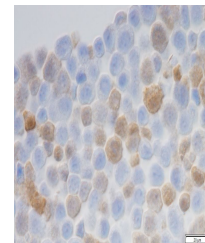
Product Datasheet

mCherry antibody (orb11618)

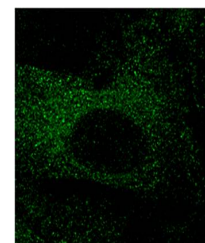
Description	Goat polyclonal antibody to mCherry (Cherry fluorescent protein).
Species/Host	Goat
Reactivity	Other
Conjugation	Unconjugated
Tested Applications	IEM, IF, IHC-Fr, IHC-P, WB
Immunogen	Purified recombinant peptide produced in E. coli.
Target	mCherry
Preservatives	PBS, 20% glycerol and 0.05% sodium azide
Form/Appearance	Polyclonal antibody supplied as a 200 or 500 µl (3 mg/ml) aliquot in PBS, 20% glycerol and 0.05% sodium azide. This antibody is epitope-affinity purified from goat antiserum.
Concentration	1 mg/ml
Storage	Maintain refrigerated at 2-8°C for up to 2 weeks. For long term storage store at -20°C in small aliquots to prevent freeze-thaw cycles.
Note	For research use only
Application notes	The antibody solution should be gently mixed before use.
Isotype	IgG
Clonality	Polyclonal
Dilution Range	WB:1:500-1:5,000, IF:1:50-1:500, IHC-P:1:50-1:500, IHC-F:1:50-1:500, IEM:1:50-1:500
Expiration Date	12 months from date of receipt.



Western blot analysis of transfected 293...



Immunohistochemical analysis of mouse ma...



Confocal immunofluorescence analysis of ...