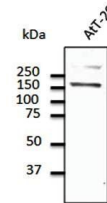


Product Datasheet

E-Cadherin antibody (orb11613)

Description	Goat polyclonal to CDH1. CDH1 is a classical member of the cadherin superfamily. This protein is a c...
Species/Host	Goat
Reactivity	Human, Mouse, Rat
Conjugation	Unconjugated
Tested Applications	IHC-Fr, IHC-P, WB
Immunogen	Purified recombinant peptide derived from within residues 750 to 850 of human CDH1 produced in E. coli.
Target	CDH1
Preservatives	PBS, 20% glycerol and 0.05% sodium azide
Form/Appearance	Supplied in PBS, 20% glycerol and 0.05% sodium azide. This antibody is epitope-affinity purified from goat antiserum.
Concentration	2 mg/ml
Storage	Maintain refrigerated at 2-8°C for up to 2 weeks. For long term storage store at -20°C in small aliquots to prevent freeze-thaw cycles.
Note	For research use only
Application notes	The antibody solution should be gently mixed before use.
Isotype	IgG
Clonality	Polyclonal
Dilution Range	WB:1:500-1:2,000, IHC-P:1:250-1:1,000, IHC-F:1:250-1:1,000
Expiration Date	12 months from date of receipt.



Western blot analysis of AtT-20 cell lys...