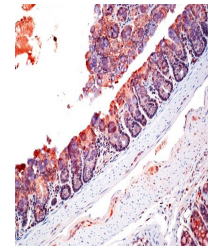


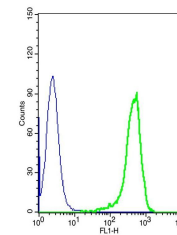
Product Datasheet

ZO-1 antibody (orb11587)

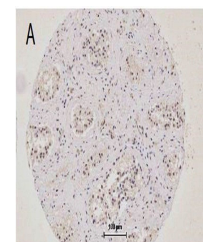
Description	ZO-1 antibody
Species/Host	Rabbit
Conjugation	Unconjugated
Tested Applications	ELISA, FACS, IHC-P
Immunogen	KLH conjugated synthetic peptide derived from human ZO-1. Please contact us for the exact immunogen sequence. The peptide is available as orb374898.
Target	ZO-1
Form/Appearance	10 mM PBS, 0.02% sodium azide
Concentration	100 µg (in 200 µl): 0.5 mg/ml- 200 µg (in 400 µl): 0.5 mg/ml
Storage	Store at 4°C for up to two weeks. For long term storage, aliquot and store at -20°C, avoid freeze/thaw cycles.
Note	For research use only
Isotype	IgG
Clonality	Polyclonal
Purity	Polyclonal antibodies are purified by peptide affinity chromatography
MW	191 kDa
Uniprot ID	Q07157 , P39447
NCBI	003248 , 31 , 003257
Entrez	7082
Dilution Range	P-ELISA: 1:500-1000 (based on 0.5 mg/ml)
Expiration Date	12 months from date of receipt.



Immunohistochemical staining of mouse colon tissue.



Flow cytometric analysis of HepG2 cells.



Immunohistochemical staining of human tissue.