
Product Datasheet

VEGFR2 antibody (orb11557)

Description

VEGFR2 antibody

Species/Host

Rabbit

Reactivity

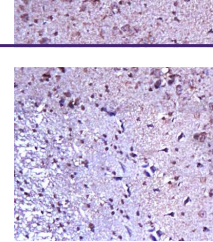
Canine, Human, Mouse, Porcine, Rat

Conjugation

Unconjugated

Tested

ELISA, ICC, IF, IHC-P, WB

Applications


Immunohistochemical analysis of formalin...

Immunogen

KLH conjugated synthetic peptide derived from human VEGFR2. Please contact us for the exact immunogen sequence. The peptide is available as orb374756.

Target

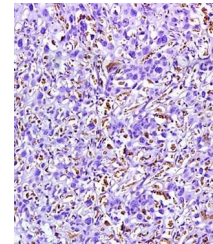
VEGFR2

Form/Appearance

10 mM PBS, 0.02% sodium azide

Concentration

- 100 µg (in 200 µl): 0.5 mg/ml- 200 µg (in 400 µl): 0.5 mg/ml



IHC-P of rat brain tissue (VEGFR2 antibo...

Storage

Store at 4°C for up to two weeks. For long term storage, aliquot and store at -20°C, avoid freeze/thaw cycles.

Note

For research use only

Isotype

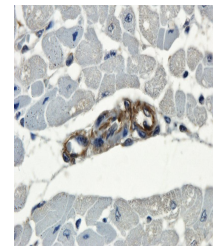
IgG

Clonality

Polyclonal

Purity

Polyclonal antibodies are purified by peptide affinity chromatography



IHC-P staining of pig heart vessel tissu...

MW

151 kDa

Uniprot ID
[P35968](#), [P35918](#), [O08775](#)
NCBI
[21](#), [002253](#), [002244](#), [11](#)
Entrez
[3791](#)
Dilution Range

WB: 2 µg/ml, IHC-P:1:200, IF/ICC: 1:200

Expiration Date

12 months from date of receipt.