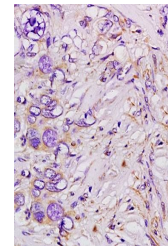


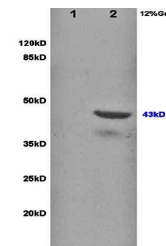
Product Datasheet

TSG101 antibody (orb11527)

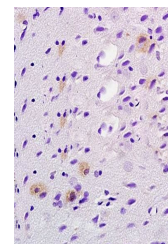
Description	TSG101 antibody
Species/Host	Rabbit
Reactivity	Human, Rat
Conjugation	Unconjugated
Tested Applications	IHC-P, WB
Immunogen	KLH conjugated synthetic peptide derived from human Tsg101 (4-120/390 aa)
Target	TSG101
Preservatives	0.01M TBS(pH7.4) with 1% rAlbumin, 0.03% Proclin300 and 50% Glycerol.
Form/Appearance	Liquid
Concentration	1mg/ml
Storage	Shipped at 4°C. Store at -20 °C for one year. Avoid repeated freeze/thaw cycles.
Note	For research use only
Isotype	IgG
Clonality	Polyclonal
MW	44 kDa
Uniprot ID	Q99816
Dilution Range	WB=1:500-2000, IHC-P=1:100-500
Expiration Date	12 months from date of receipt.



IHC-P of rat brain tissue (human colon C...



Western blot analysis of rat brain lysat...



rat heart lysates(Lane2) using TSG101 an...