
Product Datasheet

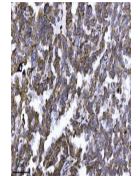
**Erlin-2/ERLIN2 Antibody (monoclonal, 3H9A2)
(orb1152402)**

Description

Erlin-2/ERLIN2 Antibody (monoclonal, 3H9A2)


Species/Host

Mouse


Reactivity

Human

Conjugation

Unconjugated

Tested Applications

FC, ICC, IF, IHC, WB

IHC analysis of ERLIN2 using anti-ERLIN2...

Immunogen

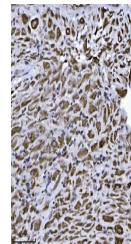
E.coli-derived human Erlin-2/ERLIN2 recombinant protein (Position: D87-N339).

Form/Appearance

Lyophilized

Concentration

Adding 0.2 ml of distilled water will yield a concentration of 500 µg/ml.


Storage

Maintain refrigerated at 2-8°C for up to 2 weeks. For long term storage store at -20°C in small aliquots to prevent freeze-thaw cycles.

Note

For research use only

Application notes

Tested Species: In-house tested species with positive results. Other applications have not been tested. Optimal dilutions should be determined by end users. Adding 0.2 ml of distilled water will yield a concentration of 500 µg/ml.

IHC analysis of ERLIN2 using anti-ERLIN2...

Isotype

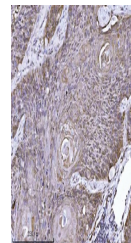
Mouse IgG2b

Clonality

Monoclonal

MW

43 kDa

Uniprot ID
[O94905](https://www.uniprot.org/entry/O94905)

Expiration Date

12 months from date of receipt.

IHC analysis of ERLIN2 using anti-ERLIN2...