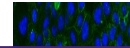

Product Datasheet

**Integrin beta 4/ITGB4 Antibody (monoclonal,
7G10D2) (orb1152401)**

Description

Integrin beta 4/ITGB4 Antibody (monoclonal,


Species/Host

Mouse

Reactivity

Human

Conjugation

Unconjugated

Tested Applications

FC, ICC, IF, WB

Immunogen

E.coli-derived human Integrin beta 4/ITGB4 recombinant protein (Position: R29-K431).

Form/Appearance

Lyophilized

Concentration

Adding 0.2 ml of distilled water will yield a concentration of 500 µg/ml.

Storage

Maintain refrigerated at 2-8°C for up to 2 weeks. For long term storage store at -20°C in small aliquots to prevent freeze-thaw cycles.

Note

For research use only

Application notes

Tested Species: In-house tested species with positive results. Other applications have not been tested. Optimal dilutions should be determined by end users. Adding 0.2 ml of distilled water will yield a concentration of 500 µg/ml.

Isotype

Mouse IgG2b

Clonality

Monoclonal

MW

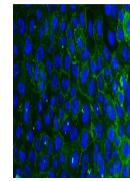
210 kDa

Uniprot ID
[P16144](#)
Sensitivity

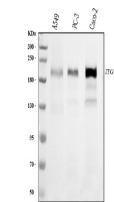
> 5000 cells

Expiration Date

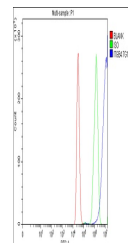
12 months from date of receipt.



IF analysis of ITGB4 using anti-ITGB4 an...



Western blot analysis of ITGB4 using ant...



Flow Cytometry analysis of MCF-7 cells u...