

## Product Datasheet

# Talin 1/TLN1 Antibody (monoclonal, 2G10D2) (orb1152398)

**Description** Talin 1/TLN1 Antibody (monoclonal, 2G10D2)

**Species/Host** Mouse

**Reactivity** Human, Mouse, Rat

**Conjugation** Unconjugated

**Tested Applications** FC, WB

**Immunogen** E.coli-derived human Talin 1/TLN1 recombinant protein (Position: Q1658-N1876).

**Form/Appearance** Lyophilized

**Concentration** Adding 0.2 ml of distilled water will yield a concentration of 500 µg/ml.

**Storage** Maintain refrigerated at 2-8°C for up to 2 weeks. For long term storage store at -20°C in small aliquots to prevent freeze-thaw cycles.

**Note** For research use only

**Application notes** Tested Species: In-house tested species with positive results. Other applications have not been tested. Optimal dilutions should be determined by end users. Adding 0.2 ml of distilled water will yield a concentration of 500 µg/ml.

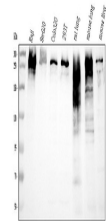
**Isotype** Mouse IgG1

**Clonality** Monoclonal

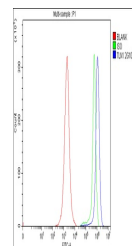
**MW** 250-270 kDa

**Uniprot ID** [Q9Y490](#)

**Expiration Date** 12 months from date of receipt.



Western blot analysis of TLN1 using anti...



Flow Cytometry analysis of JK cells usin...