
Product Datasheet

**RCC1 Antibody (monoclonal, 6B11E7)
(orb1152396)**

Description

RCC1 Antibody (monoclonal, 6B11E7)



Species/Host

Mouse

Reactivity

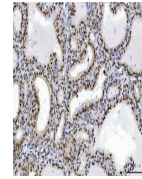
Human

Conjugation

Unconjugated

Tested Applications

ICC, IF, IHC, WB



IHC analysis of RCC1 using anti-RCC1 ant...

Immunogen

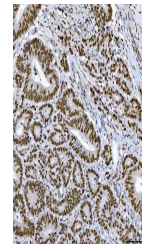
E.coli-derived human RCC1 recombinant protein (Position: A14-S421).

Form/Appearance

Lyophilized

Concentration

Adding 0.2 ml of distilled water will yield a concentration of 500 µg/ml.



Storage

Maintain refrigerated at 2-8°C for up to 2 weeks. For long term storage store at -20°C in small aliquots to prevent freeze-thaw cycles.

Note

For research use only

Application notes

Tested Species: In-house tested species with positive results. Other applications have not been tested. Optimal dilutions should be determined by end users. Adding 0.2 ml of distilled water will yield a concentration of 500 µg/ml.

IHC analysis of RCC1 using anti-RCC1 ant...

Isotype

Mouse IgG2a

Clonality

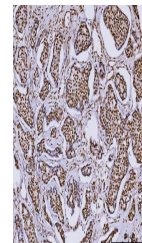
Monoclonal

MW

47 kDa

Uniprot ID

P18754



Expiration Date

12 months from date of receipt.

IHC analysis of RCC1 using anti-RCC1 ant...